

# TENTH CLASS MODEL PAPER (TG)

SUMMATIVE ASSESSMENT - 1 (2025-26)

Social Studies (English Version)

Time: 3 Hrs.

Max.Marks: 80

- Instructions: i) Read the question paper carefully, understand, and answer.  
 ii) Write the answers for the questions in Part-A in the answer sheet.  
 iii) Attach the Map to Part-A answer sheet.  
 iv) Attach Part-B to the Part-A answer sheet.  
 v) Part-A consists of I, II and III sections.  
 vi) Write the answers clearly, duly following the instructions given for each section.

Time: 2 Hrs. 30 Min.

PART - A

Marks: 60

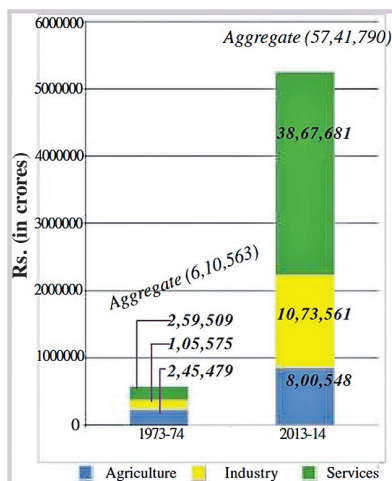
## SECTION - I

Instructions: i) Answer all the questions.

ii) Each question carries 2 marks.

iii) Answer each question with 3 - 4 sentences.  $6 \times 2 = 12$

- Give four examples where factors other than income are important aspects of our lives.
- Differentiate between the Himalayan Rivers and the Indian peninsular rivers?
- Write two slogans on equality in society.
- Suggest a few measures for better democracy and ethical governance.
- Draw the outline map of Nigeria.
- Read the graph and answer the A&B questions.



A) Which was the largest producing sector in 1972-73?

B) Which was the largest producing sector in 2013-14?

## SECTION - II

**Instructions: i) Answer all the questions.**

**ii) Each question carries 4 marks.**

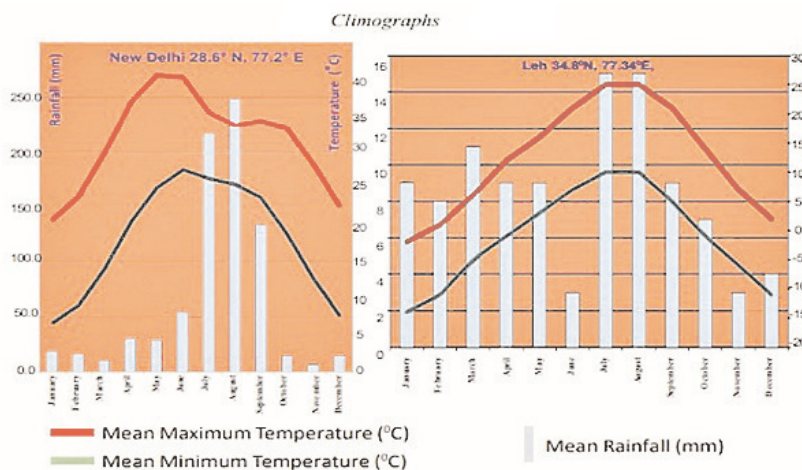
**iii) Answer each question 5 - 6 sentences.**

**6 × 4 = 24**

7. Explain about the Climate controls or the factors that affect climate.
8. Name any common features of fascist movements?
9. Prepare a pamphlet on “The importance of water conservation”.
10. Read the given paragraph, understand, and comment.

The faster melting of Himalayan glaciers would disturb the livelihood of freshwater fisherfolk as their natural habitat of fish is affected. Similarly, freak weather conditions that you read about are likely to increase. Climate change is something that happens at a global level. Therefore, it affects all of us.

**11. Observe the following graph and analyse it.**



**12. Locate the following in the given-out line map of the World.**

- |                  |                              |
|------------------|------------------------------|
| A) Germany       | B) River Nile                |
| C) Pacific Ocean | D) The Ottoman Empire County |

## SECTION - III

**Instructions: i) Answer any Four questions.**

**ii) Each question carries 6 marks.**

**iii) Answer each question 8 - 10 sentences.**

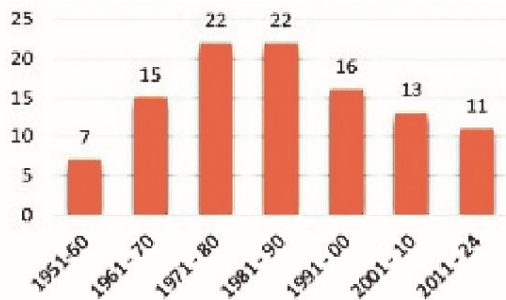
**4 × 6 = 24**

13. What is the general thinking of the women who work outside the homes?
14. What is Economic Depression? What are its consequences.
15. Give suggestions to improve more employment opportunities for all the people in your area.

16. Read the given paragraph, understand, and comment.

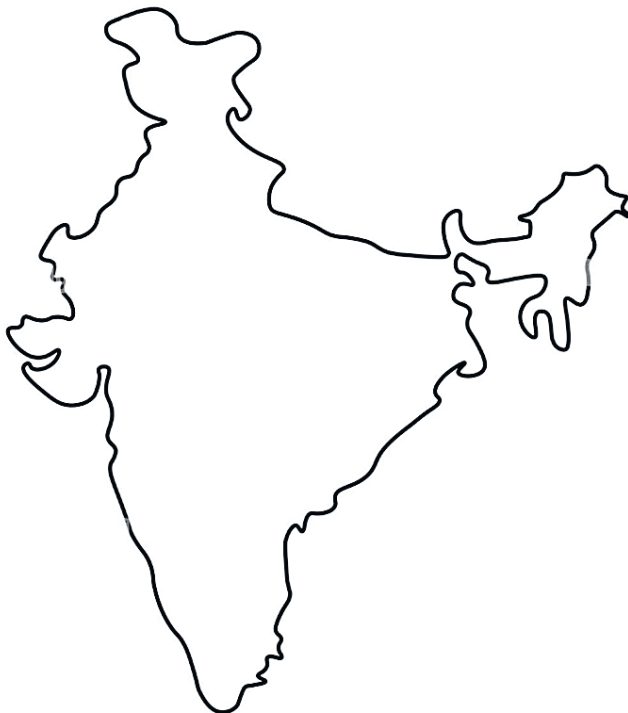
India is the second most populous country in the world. It is a huge task to conduct elections in India. Every political party promises to give good governance, socio-economic equality, and the eradication of poverty. But a few corrupted politicians, those who have a criminal background, adopt illegal practices to manage the voters. Their practices lead some to make fun of the election process.

17. Read the graph and analyse it.



*Since the Constitution was Came into force on 26th January 1950 till 2024 nearly 106 amendments were made.*

18. Locate the following in the given line map of India.



A) Malwa plateau

B) Damodar River

C) Capital of Manipur

D) Annamalai hills

E) Punjab

F) Thar Desert





- 12.** Which factor does not contribute to changing the population size? ( )  
 A) Birth                      B) Death                      C) Migration                      D) Sex ratio
- 13.** One of the three principles of Sun-Yat-Sen is “Min”, which means ( )  
 A) Nationalism                      B) Democracy                      C) Socialism                      D) Secular
- 14.** These settlements usually receive all the facilities ( )  
 A) Planned colonies                      B) Unauthorized colonies  
 C) Slum areas                      D) Hilly areas
- 15.** Gestapo Means ( )  
 A) Private Army of Nazis                      B) Secret State Police  
 C) Criminal Enquiry Police                      D) Russian Military Forces
- 16.** The main reason for female migration is ( )  
 A) Marriage                      B) Education                      C) Employment                      D) Business
- 17.** The immediate cause of World War II ( )  
 A) Aggressive Nationalism                      B) Hitler's Attack on Poland  
 C) Militarism                      D) Death of Ferdinand and Sofia
- 18.** Which one is mismatched? ( )  
 A) Jammu hills - Jammu and Kashmir  
 B) Mishmi hills - Arunachal Pradesh  
 C) Kochhar hills - Assam  
 D) Patkai hills - Uttar Pradesh
- 19.** Present Secretary-General of the United Nations ( )  
 A) Ban Ki-moon                      B) Boutros-Ghali  
 C) U Thant                      D) Antonio Guterres
- 20.** Present Chief Election Commissioner of India ( )  
 A) Gyanesh Kumar                      B) Sukumar Sen  
 C) Mr. Sunil Arora                      D) Shri Rajiv Kumar